



Pulsejet Candle Filter

Efficiently Faster | Easier | Better

■ Filtration ■ Concentration ■ Separation

www.sharplex.com



■ CARBON FILTRATION

■ CATALYST RECOVERY

■ BRINE FILTRATION

■ SPIN BATH FILTRATION

■ SUMP ZONE FILTRATION

FILTRATION

Efficient Out-In filtration

CAKE WASHING

In-situ cake washing facility

DRY CAKE RECOVERY

Efficient cake drying and recovery

EFFICIENT CLEANING

Fast and efficient In-situ cleaning

About Us

Sharpex Agro Process (India) Pvt. Ltd. was established in the year 1993 under the able leadership of Mr. Satish Vasudeo Khadke. In the year 1995 it was renamed as **Sharpex Filters (India) Pvt. Ltd.**

Backed up with a vast experience of working with the largest Indian engineering company, Larsen & Toubro Ltd. (L&T) for over 12 years, Mr. Satish V. Khadke has introduced key process filtration equipments to the Indian Edible Oil, Chemical, Pharma, Fertilizer Industries, which were otherwise being imported.

A strong focus on our manufacturing infrastructure, and consistent focus on product and service quality over the years, we were able to establish SHARPLEX as a strong brand which assured product and service quality and was trusted across the process industries worldwide.

Our Infrastructure

Our manufacturing facility at Rabale, Navi Mumbai, India, is spread over an area of 4,500 sq.mt is equipped with the latest machineries and experienced personnel. We are certified with **ISO 9001, PED 2014/68/EU** by LRIS and authorised to offer filters with **CE** marking.

In 2008, we expanded our manufacturing infrastructure by acquiring another plant with an area of 3,500 sq.mt at Navi Mumbai.

At our integrated CAD-CAM center, a team of highly experienced designers work on design software like Pv-Elite (for ASME Calculations) and Solid-Edge to create accurate 3D models that enable efficient and accurate manufacturing of world class filtration systems.



The Sharpex edge

25 YEARS OF EXCELLENCE

5000+ SATISFIED CUSTOMERS

250+ PASSIONATE EMPLOYEES

Our strong impetus on quality is evident from the global certifications conferred on our manufacturing plants / processes. We are certified with

- ISO 9001:2015
- CE
- OHSAS 18001
- EMS /14001

80+ COUNTRIES EXPORTED

80,000 FT² FACTORY AREA

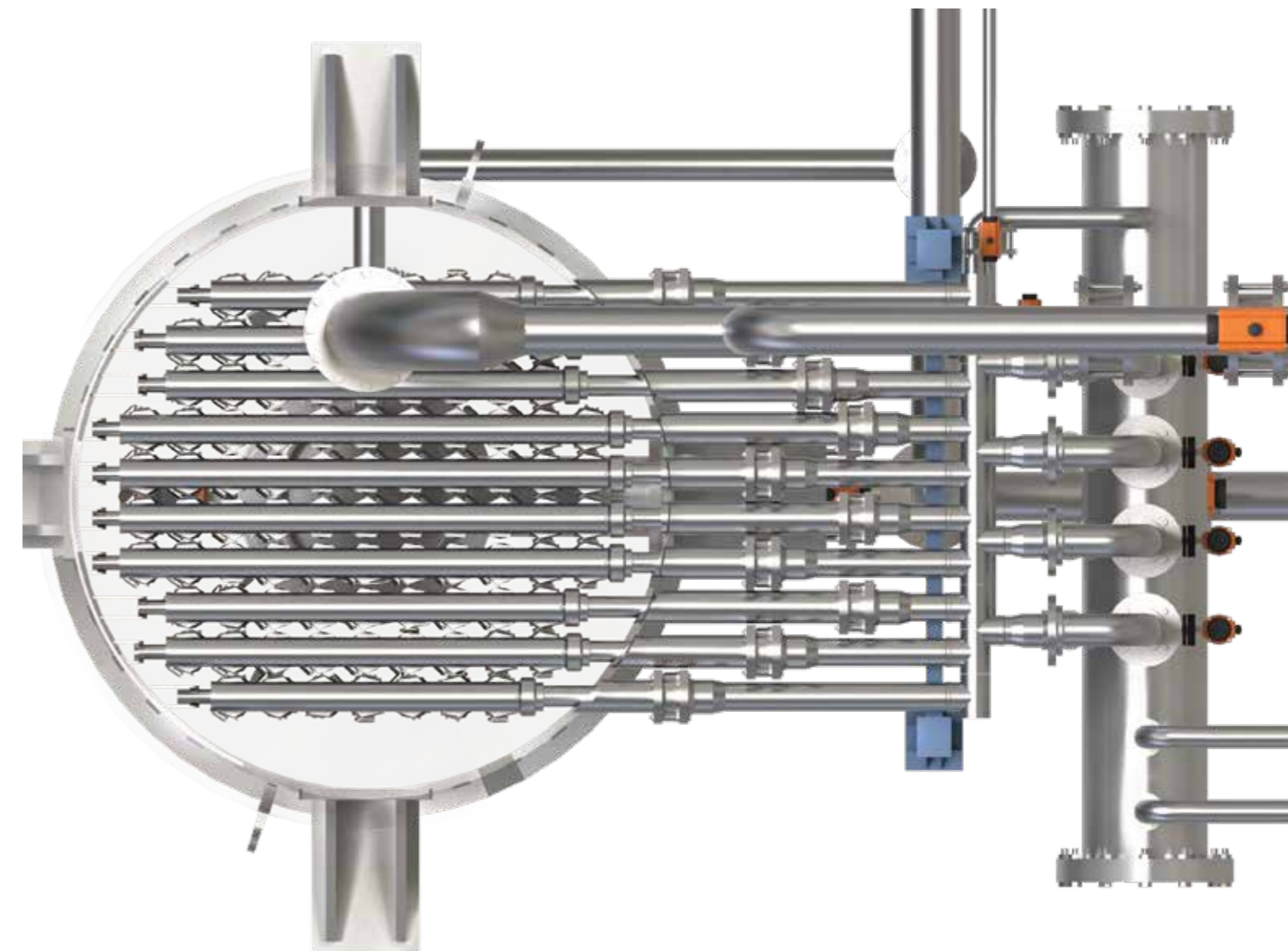
5 CONTINENT CUSTOMER PRESENCE



Sharpex - A brand that signifies customer trust and loyalty gained over a period of over 25 years, by delivering quality filtration systems that assures consistent and optimal performance. We have backed this up with our world class service support.

This is the best validation of our design, engineering and manufacturing competency.

FILLING PRE-COATING FILTRATION CAKE WASHING CAKE DRYING CAKE DISCHARGE



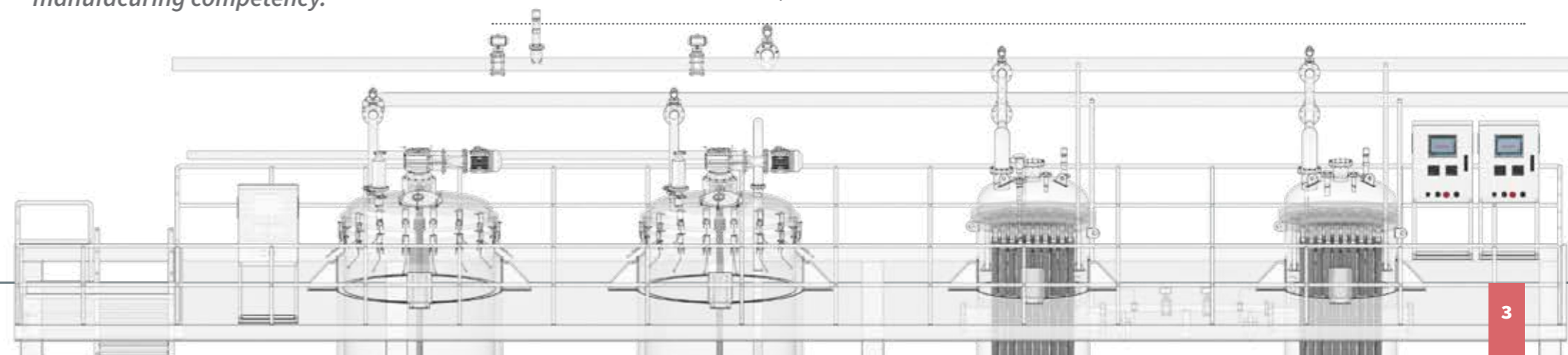
Sharpex Pulse Jet Candle Filter

Superior Design, Engineering and validated performance

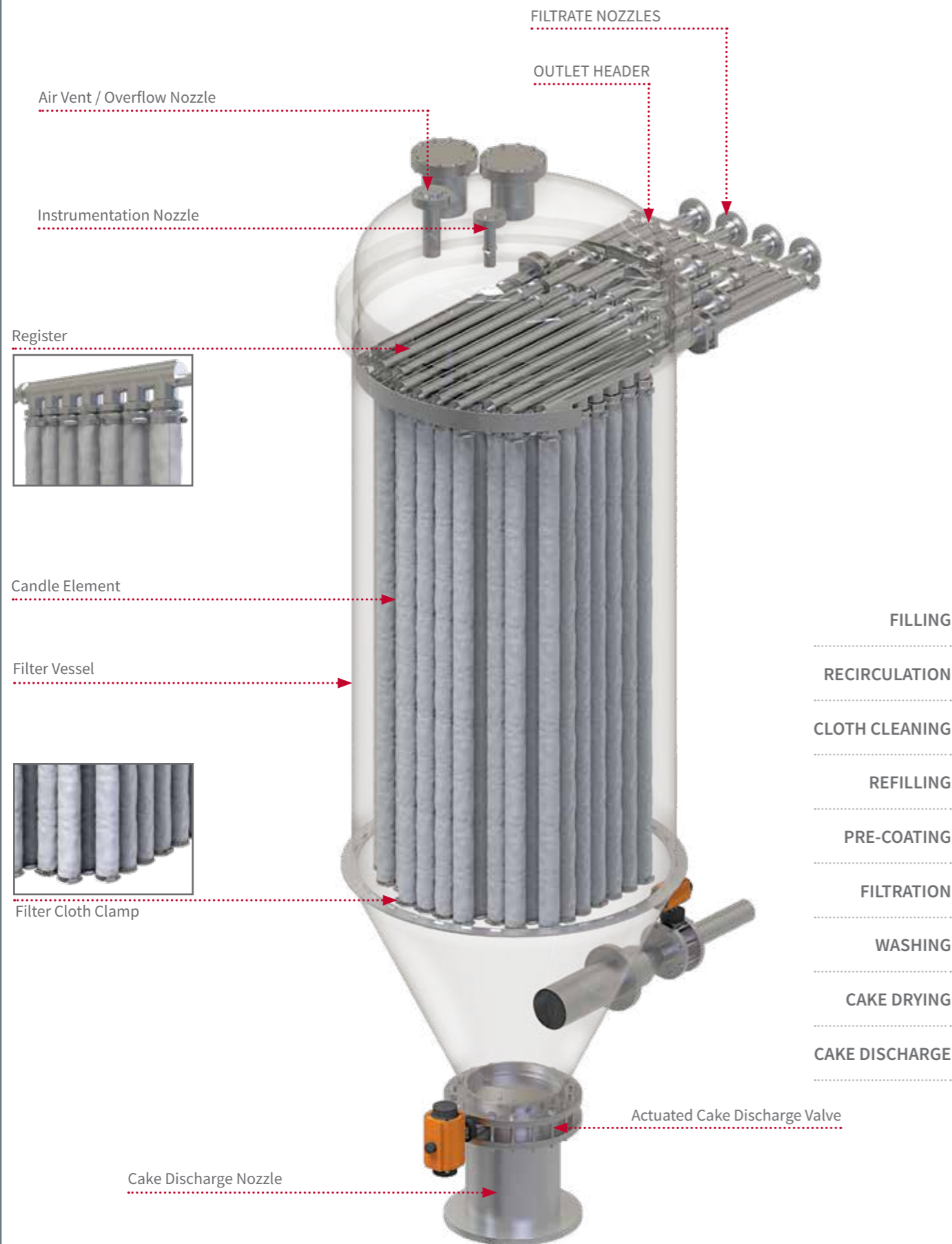
Sharpex Pulse Jet Candle Filter consists of candle shaped filter elements made of equi-diameter pipes. Each candle is covered with seamless filter hose made either in Polypropylene, Polyester, Nylon, PPS or PVDF. These candles are arranged vertically in a pressure vessel. The number of candles depends on filtration area required. Filtration and cake formation takes place under pressure. Wet or dry cake discharge is possible by means of blow back. Two filters can be installed for continuous operation.

The completely enclosed and hermetically sealed system is ideally suited for the filtration of water or solvent based toxic products. Products can be manufactured under inert and sterile conditions with GMP compliance.

Filters and internals are available in carbon steel, SS304, SS316, SS316L, SS904L, Hastelloy, Titanium, SM0254. Filter candles are also available in PP and PVDF.



Pulsejet - Anatomy



Operational Cycles

FILLING

The vessel is filled completely with the liquid to be filtered and pressurized. The liquid contains the pre-coating media.

PRE-COATING

The liquid with filter aid is circulated continuously to form a filtration layer that enables efficient filtration and enables high clarity of the filtrate.

FILTRATION

The fluid to be filtered is passed through the pre-coated filter media (if pre-coating is necessary) and re-circulated (process dependent).

CAKE WASHING

The cake washing fluid is re-circulated through the cake continuously. The duration of re-circulation depends on the process.

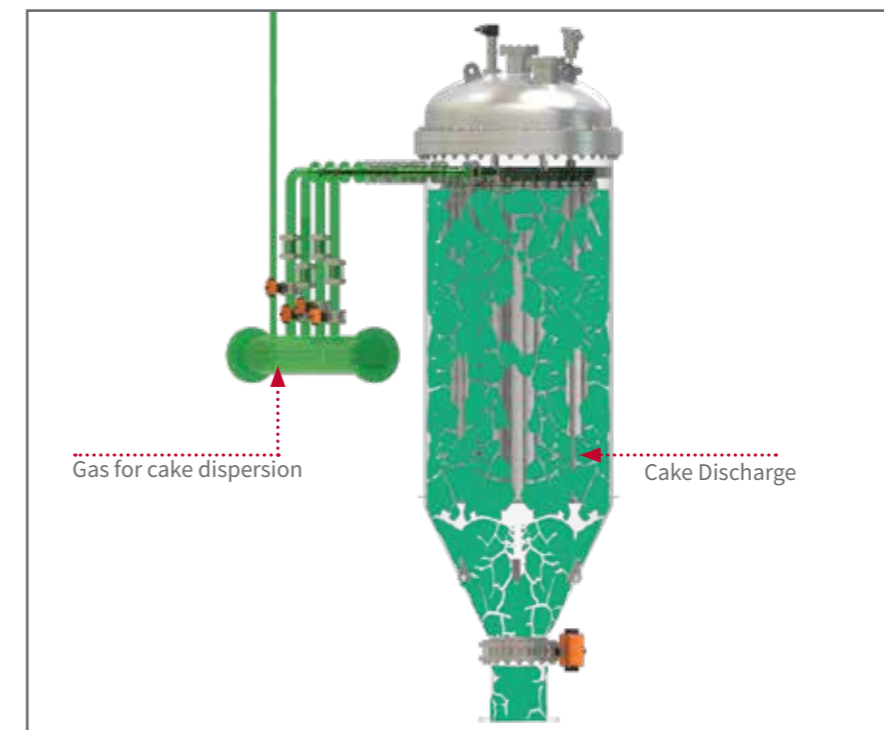
CAKE DRYING

Air, Nitrogen or Steam is passed inside in forward direction in the vessel to dry the cake.

CAKE DISCHARGE

The cake accumulated is dislodged by passing the compatible gas from the reverse direction.

The Cake Discharge



Automation and MOC

AUTOMATION

The Sharpex Pulsejet Candle Filtration systems can be fully automated for all its operational cycles with a PLC or SCADA. This enables operational consistency, reliability and consistent output quality.

FILTER MEDIA OPTIONS

The Sharpex Pulsejet Candle Filtration systems are designed to accommodate a wide range of filter media. We offer high quality, high efficiency filter media to suit wide ranging applications. Depending on the process requirement, the system

provides the option for filtration with pre-coat or direct filtration using suitable filter media.

MATERIAL OF CONSTRUCTION

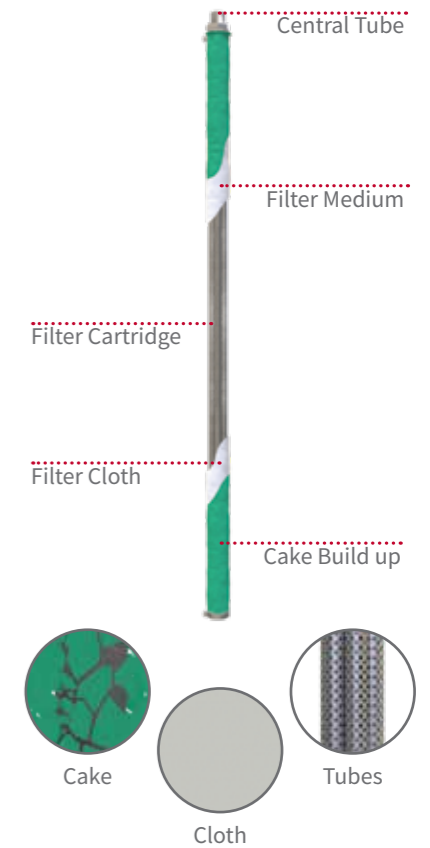
Depending on the application, the Sharpex Pulsejet Candle Filter system is designed with various materials.

Main Filter Vessel: Carbon Steel, SS 304, 316L, Nickel alloys, Fiberglass, Titanium and various other material.

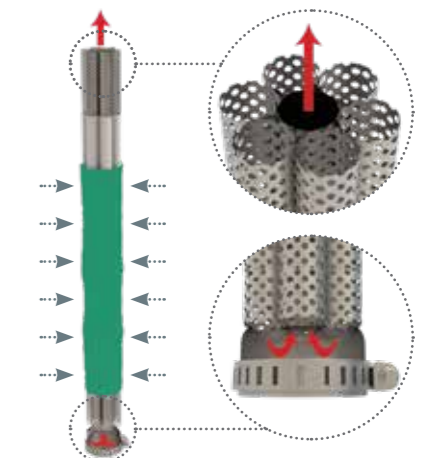
Internal Lining: Natural Rubber, Polypropylene, PVDF, PFA, Halar etc.

Filter Media: PVDF, PPS, PE, PEEK etc.

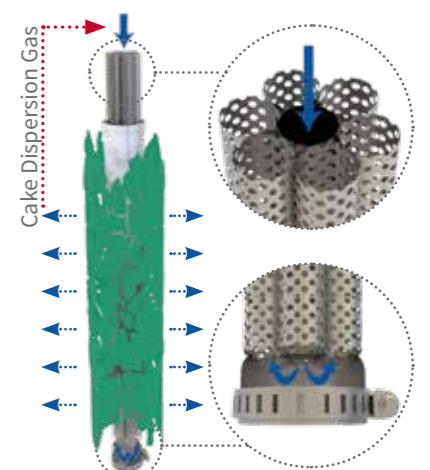
FILTER COMPONENTS



FILTRATION



CAKE DISCHARGE



Pulsejet - Key Features

Sharplex Candle Filtration system comes with various advantages over other types of filtration systems. They include;

- Very high filtrate clarity
- Large filtration area with small footprint
- High liquid throughput without cake erosion
- Option for Dry or wet cake discharge
- Option for pre-coating or direct filtration
- Continuous filtration with parallel system
- Option for fully automated cycles with PLC / SCADA options
- Complete heel volume recovery
- Option for washing the cake
- Can be used as continuous thickener
- Option to discharge cake by blowback, using low air volumes

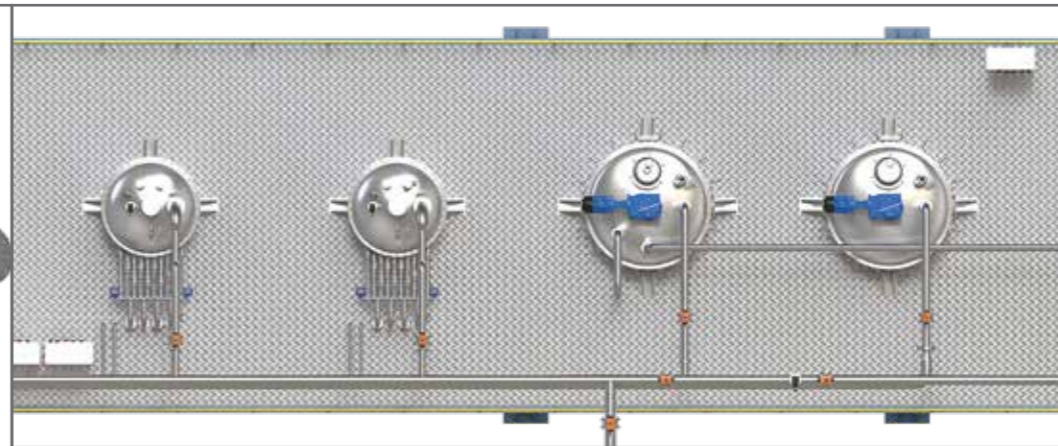
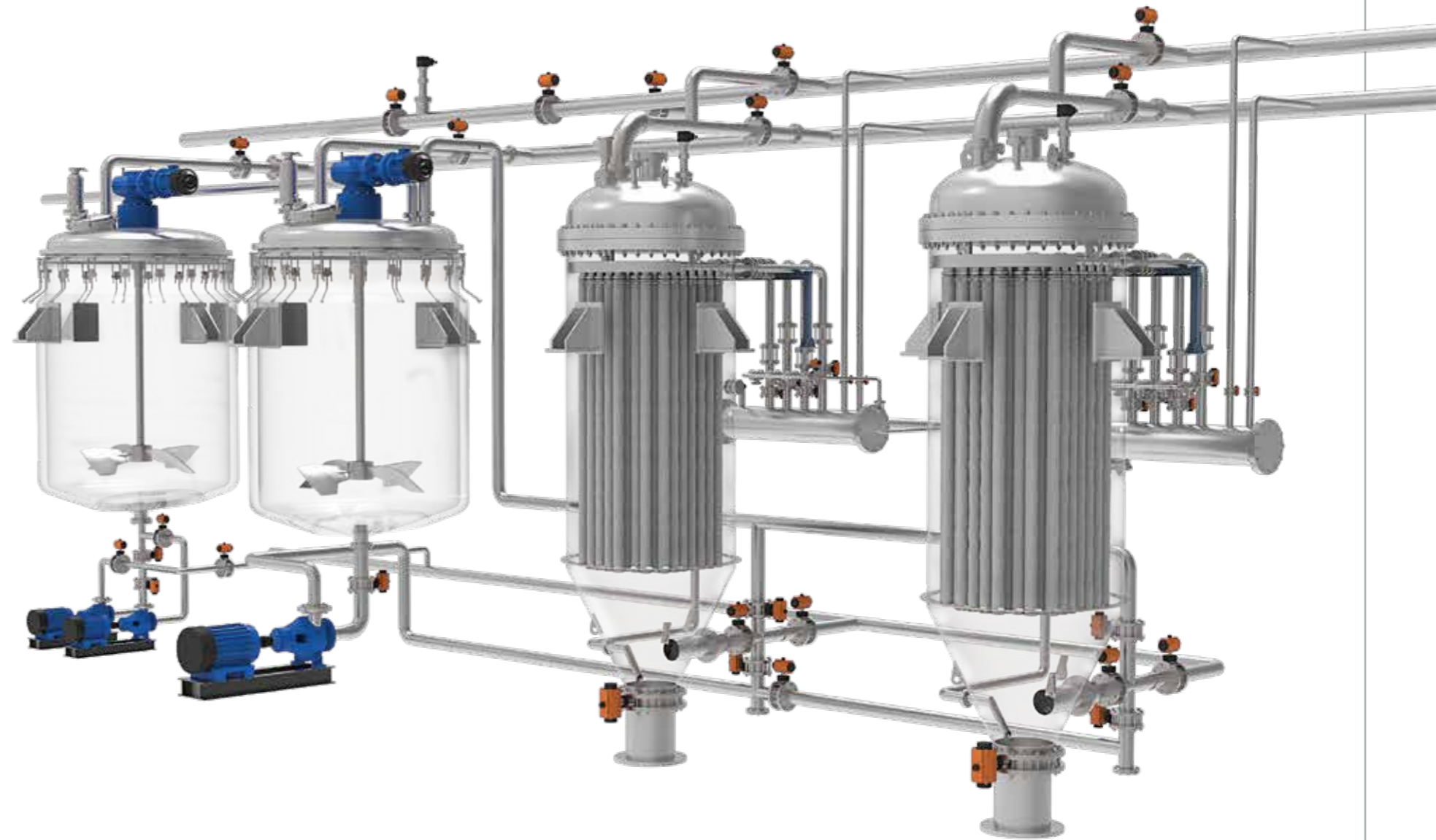
Pulsejet - The Filter Media / Element

- Hose can be of woven or non-woven filter media and can filter by pulse laundering, resulting in very clean media
- Enables to maintain high filtration rates without binding to the fabric
- Designed to release the cake with minimal pressure
- Consistency in particle retention
- Designed for efficient in-situ cleaning
- Availability of wide range of media for compatibility with various solvents / fluids
- Filter media designed for efficient solid cake build up and retention
- Designed to be long lasting and regain efficiency after cleaning

Pulsejet - Key Applications

Sharplex Pulsejet Candle Filtration system can be used in a wide range of applications like;

- Catalyst recovery
- Activated Carbon filtration
- Clarification of Antibiotic solution
- Filtration of Polyols
- Brine purification in Caustic Soda plant
- Beverage filtration
- Fruit Juice filtration
- Spin bath, acid filtration in Viscose Plant
- Wax filtration
- Glucose / Starch filtration
- Fuel Gas desulphurization
- Waste Water Recycling
- Option for pre-coating or direct filtration
- Continuous filtration with parallel system
- Caffeine plant extract
- Filtration in PTA plants
- Filtration in Bio-diesel plants
- Cocoa Butter filtration





www.sharplex.com



SHARPLEX FILTERS (INDIA) PVT. LTD.

R-664, Rabale, M.I.D.C, T.T.C Industrial Area,
Thane Belapur Road, Navi Mumbai - 400701, INDIA

Contact No: +91-9136921232 to 39,

Mobile: +91-9820029829

Email : sales@sharplexfilters.com

