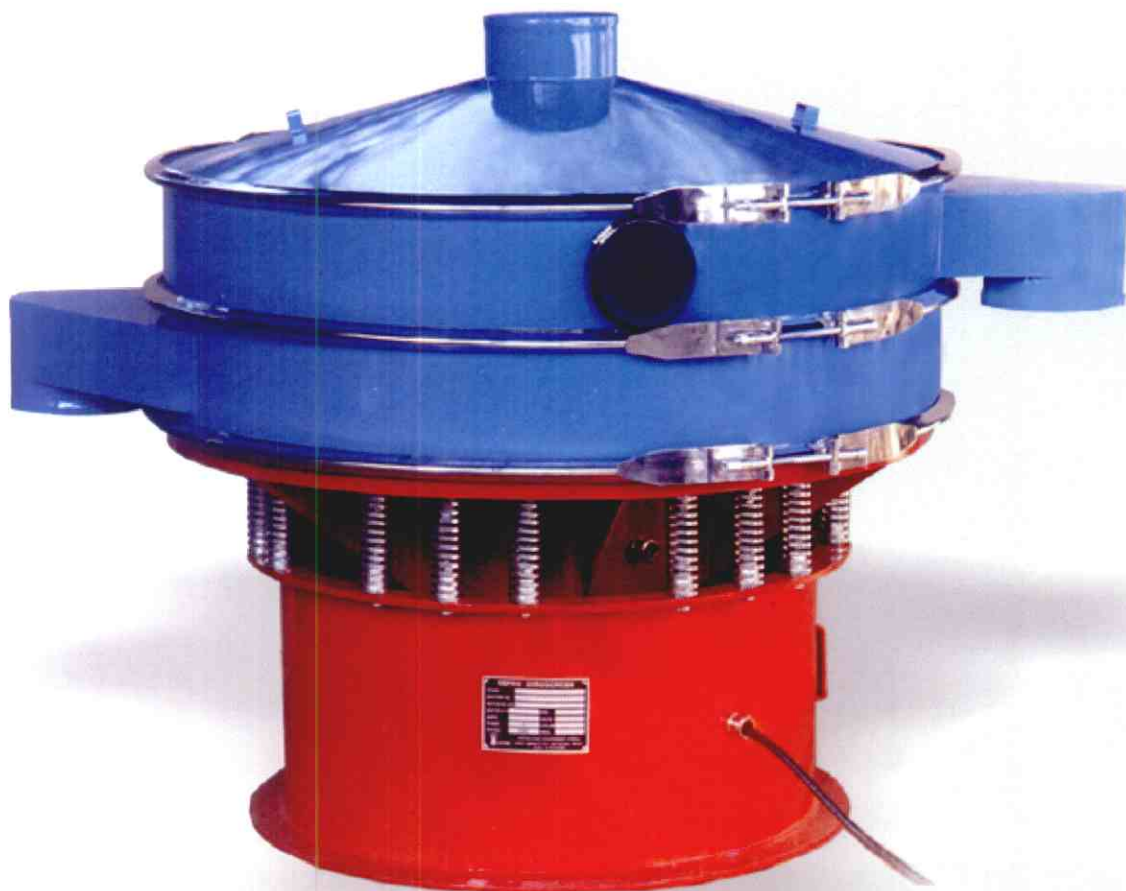


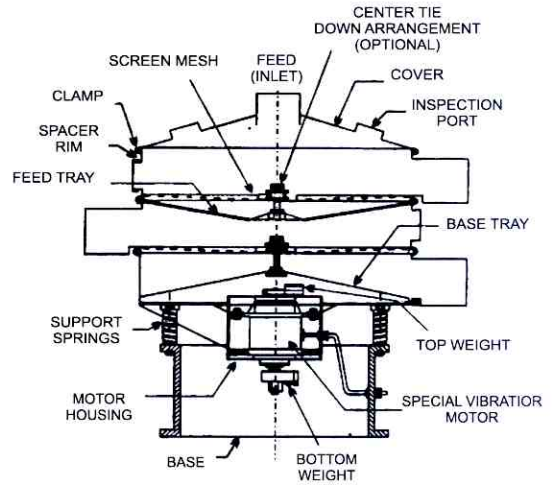
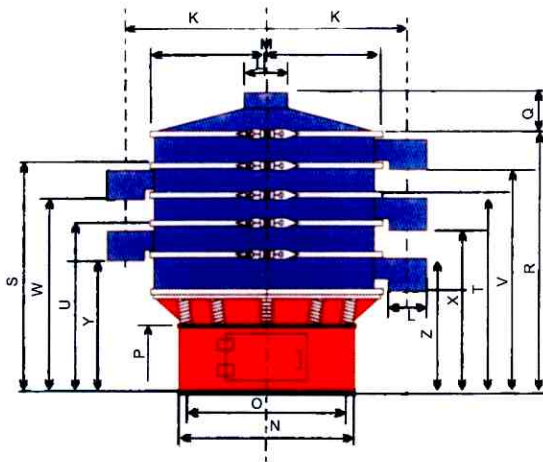
Sharplex[®]

Gyroscreen

The Most Efficient
Vibrating Screen
For Wet & Dry Screening



SCHEMATIC DIAGRAMS



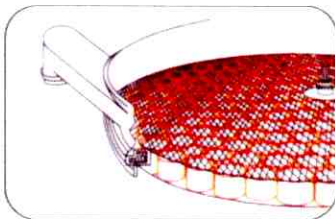
All Dimensions in mm.

MODEL	Z	Y	X	W	V	U	T	S	R	Q	P	O	N	M	L	K	MOOTP H.P.
S-600	387	501	616	730	845	635	749	863	978	114	305	451	501	622	152	400	0.5
S-750	387	501	616	730	845	635	749	863	978	114	305	559	635	762	152	490	0.5
S-900	422	587	701	815	929	724	838	952	1066	140	280	574	680	925	152	571	0.5
S-1200	565	711	882	1054	1225	901	1073	1245	1416	209	381	831	921	1206	203	743	1.5
S-1500	565	775	984	1194	1403	1016	1225	1435	1645	171	381	1010	1118	1524	203	914	1.5
S-1800	568	816	1063	1311	1559	1083	1330	1570	1825	190	279	1168	1264	1803	203	1035	2.0/3.0

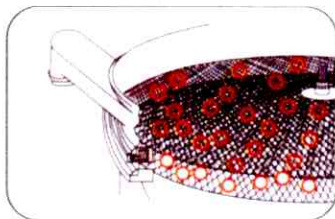
Applications :

Abrasives, Biscuits, Cattle Fees, Ceramics, Chemicals, Cellulose Powder, Detergent Powder, Edible Oil, Effluents Fertilizers, Food Industry, Metal Powder/Shot & Grits, Pharmaceuticals, Polymer Resin/Plastic, Paper, Paints Refractory, Starch Slirry, Sand & Glass, Spices, Salt, Tea etc.

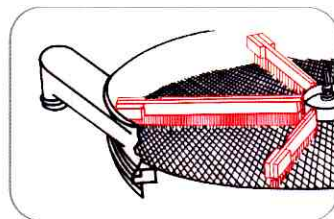
Anti-blinding arrangements for screen :



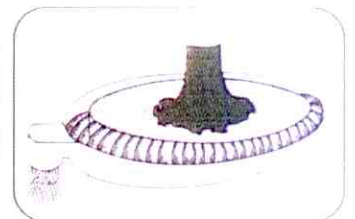
Anti-Blinding Arrangement with PVC Pipes



Anti-Blinding Arrangement with Rubber Balls



Anti-Blinding Arrangement with Brush



Cascade Arrangement



SHARPLEX FILTERS (INDIA) PVT. LTD.

AN ISO 9001:2008 COMPANY

R-664, TTC Indl. Area, Thane-Belapur Road, Rabale, MIDC,
Navi Mumbai - 400 701, India. Tel.: +91-22-27696322 / 31 / 39
Fax : +91-22-27696325 E-mail : sharplex@vsnl.com www.sharplex.com

